

CTSPMA4010F Series

From .47 μ H to 10 μ H



SPECIFICATIONS

Parts are available in $\pm 20\%$ inductance tolerance only

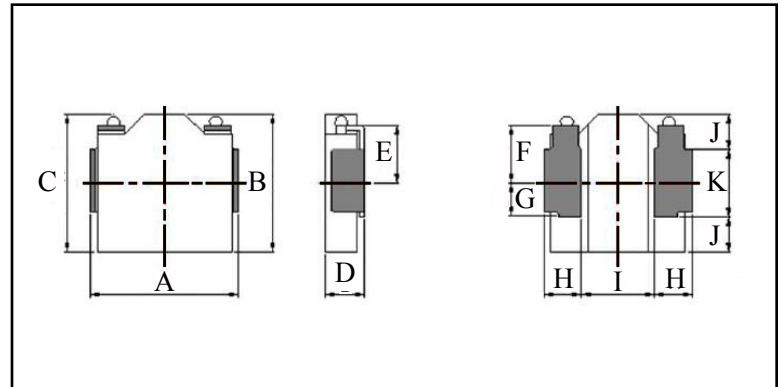
Part Number	Inductance (μ H)	L Test Condition	DCR Max. (m Ω)	Isat Max. (A)	Irms Max. (A)
CTSPMA4010F-R47M	0.47	100KHz, 1V	35.3	8.2	4.6
CTSPMA4010F-R68M	0.68	100KHz, 1V	36.0	6.2	4.6
CTSPMA4010F-1R0M	1.00	100KHz, 1V	42.5	4.7	4.0
CTSPMA4010F-1R5M	1.50	100KHz, 1V	64.0	4.2	3.4
CTSPMA4010F-2R2M	2.20	100KHz, 1V	87.0	3.4	2.6
CTSPMA4010F-3R3M	3.30	100KHz, 1V	120.0	2.9	2.1
CTSPMA4010F-4R7M	4.70	100KHz, 1V	210.0	2.4	1.6
CTSPMA4010F-6R8M	6.80	100KHz, 1V	245.0	1.8	1.5
CTSPMA4010F-100M	10	100KHz, 1V	350.0	1.4	1.1

PHYSICAL DIMENSIONS

Size	A	B	C	D	E	F
			Max.	Max.		
mm	4.4 \pm 0.2	4.1 \pm 0.2	4.4	1.0	1.60	1.60
inches	0.17 \pm 0.008	0.16 \pm 0.008	0.17	0.039	0.063	0.063
Size	G	H	I	J	K	
mm	1.0	1.10 \pm 0.1	2.2	1.05 \pm 0.1	2.0	
inches	0.039	0.043 \pm 0.004	0.087	0.041 \pm 0.004	0.079	

CHARACTERISTICS

Description: SMD (shielded) Power Inductors
Applications: Smart phones, Notebook PC's, Tablets, HDD's, Servers, VRM's, Compact power supply modules, etc.
Saturation Rated Current (Isat): The DC current when the when the inductance becomes 30% lower than its initial value. (Ta=25°C)
Temperature Rise Current (Irms): The actual current when temperature of coil becomes $\Delta T 40^\circ\text{C}$. (Ta=25°C)
Operating Temperature Range: -55°C to 155°C
Markings: Inductance Code
Miscellaneous: RoHS compliant
Samples available. See website for ordering information.



PAD LAYOUT

